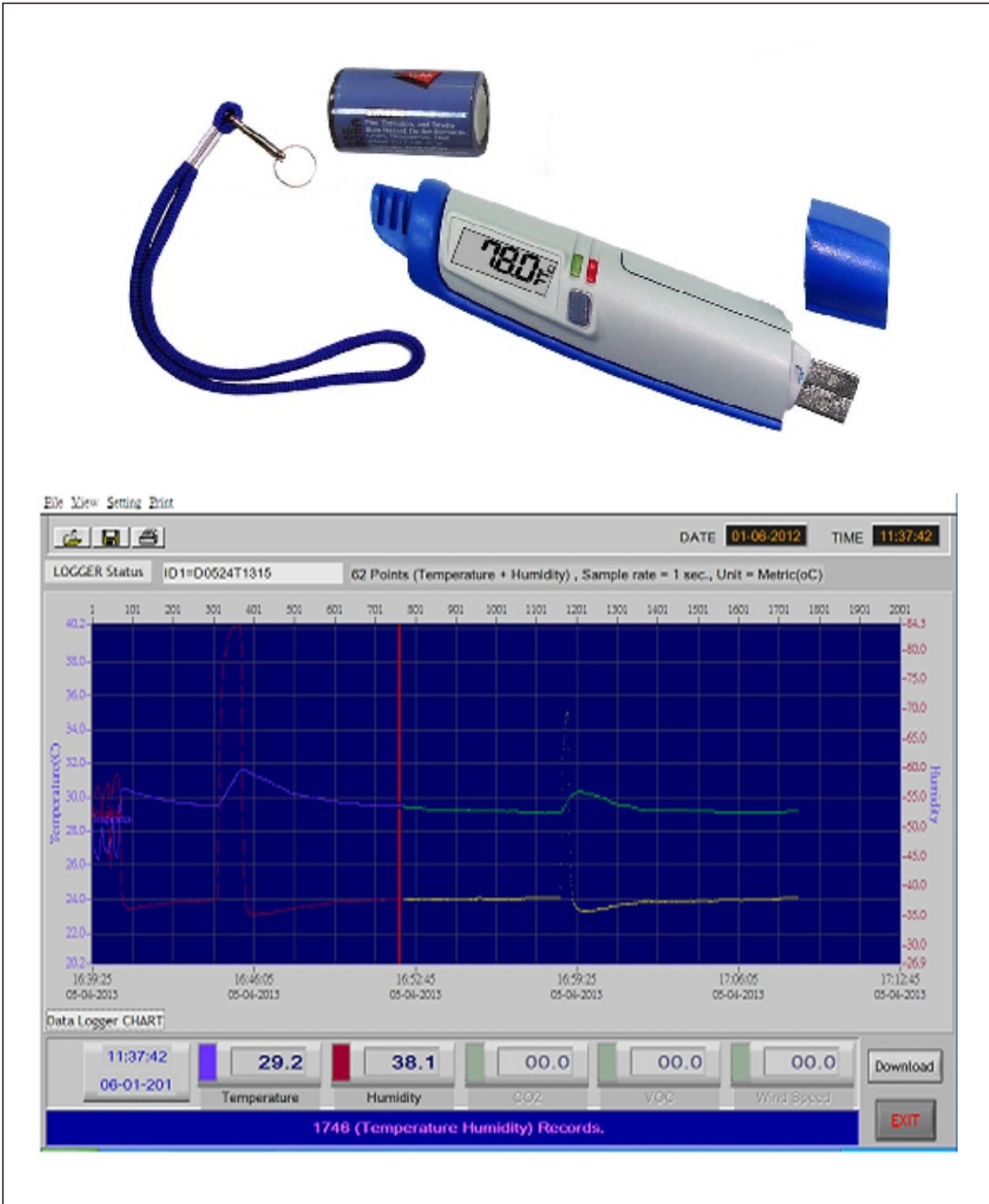


OPERATION MANUAL

USB Datalogger (Temp./RH/Thermocouple)

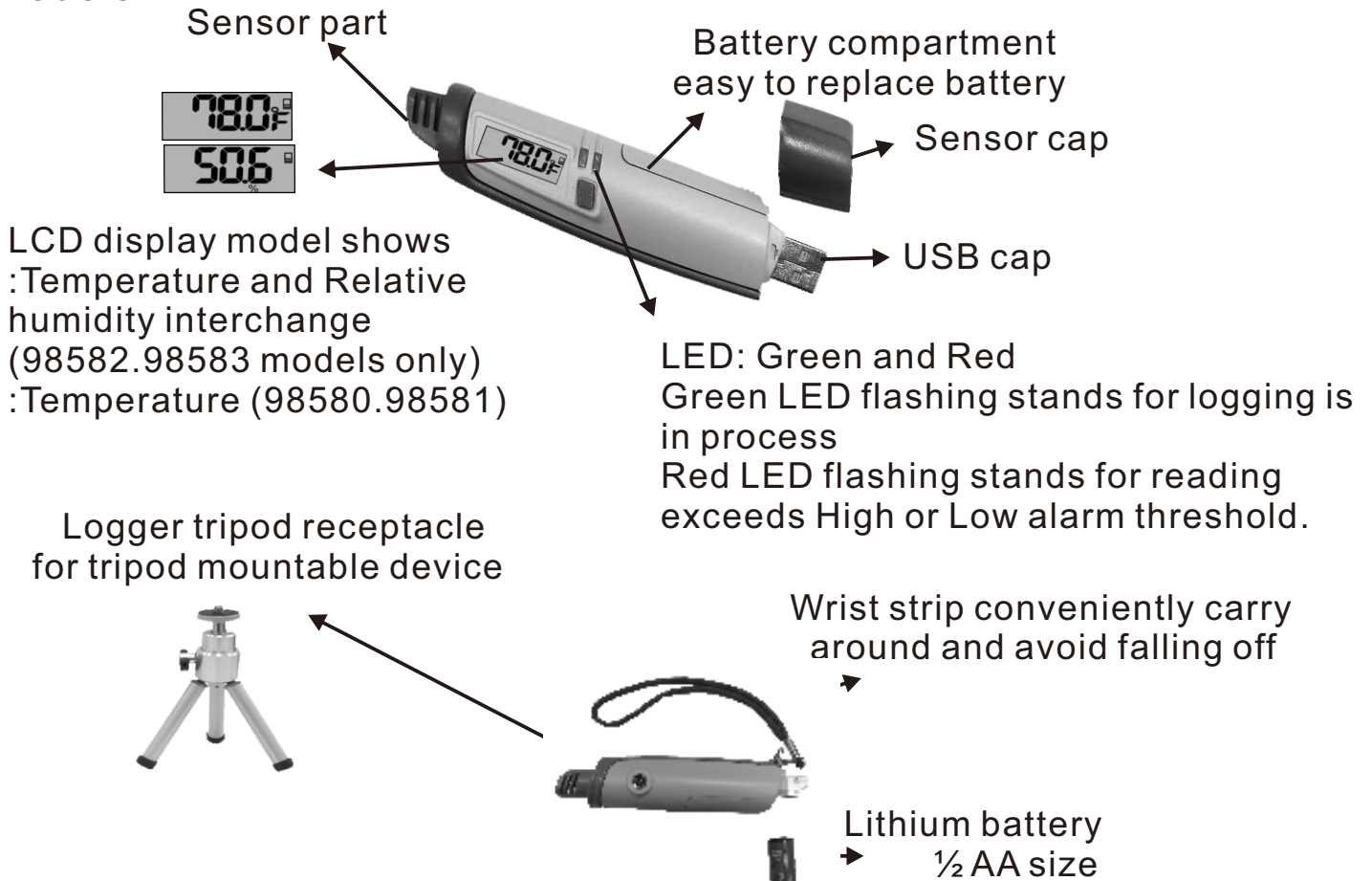


LOGGER INTRODUCTION

A very smart and cost-effective mini USB logger , save your cost without logger cradle !

Many different parameters are selectable with the modern shape design, versatile application is applicable and applied.

Ultrasonic sealed housing meets IP57 water resistant for Temp.RH models.



The standard package supplied :

- USB logger unit with USB clear cap (All models), sensor cap (Temp.RH models)
- 1/2AA lithium battery x 1 pc
- Operation and installation manual
- White plain box
- Wrist stip x 1
- K type thermocouple probe (9858x5 series only). J.T type are optional.
- Download the software from : <http://www.meterindco.com.tw/> →Download →Datalogger software→Step1-USB Driver (For Win 10)→Step2-DatalogV3_1 (English Version)_Win 10 or above version.

→ Battery : 3.6V 1/2AA x 1

Battery life depends on sample rate, ambient temperature and sample point setting, normally one year.

LOGGER SPECIFICATION

Spec./Model no.	98580	98581	98582	98583
Record data	Temperature		Temperature, RH	
LCD display	YES (NO - 985805)	YES (NO - 985815)	YES (NO - 985825)	YES (NO - 985835)
sample interval	From 1 seconds to 6 hours			
start mode	key start / stop, Real-time, Schedule, Immediately, Rollover			
Temp. range	-40.0~85.0°C (-40~185°F)			
Accuracy	±0.6°C (-20~50°C), others ±1.2°C			
RH% range	N/A		0.1%RH~99.9%RH	
Accuracy	N/A		±3%RH(at 25°C, 10~90%RH, others ±5%RH)	
Memory capacity	16000	32000	16000	32000
Operating Temp.	0~50°C (32~122°F), < 80%RH			

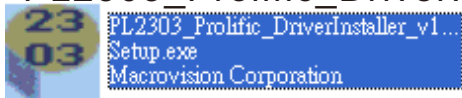
We supply the unique feature for thermocouple logger with relative humidity recording:

Spec./Model	985875	985905	985885	985895
Sample interval	0~6 hours, 0~59 minutes, 0~59 seconds (1 second to 6 hours)			
Logger mode	key start / stop, Immediately, Schedule, Real-time, Rollover			
Temp. range (°C)	K:-200~1370°C	K:-200~1370°C J:-200~760°C T:-200~390°C	K:-200~1370°C	K:-200~1370°C J:-200~760°C T:-200~390°C
Temp. range (°F)	K:-328~2372°F	K:-328~2372°F J:-328~1400°F T:-328~734°F	K:-328~2372°F	K:-328~2372°F J:-328~1400°F T:-328~734°F
Resolution	0.5°C (Display 1°C/°F)			
Accuracy (K)	±(0.1% rdg + 0.7°C)			
Accuracy (J)	N/A	±(01% rdg + 0.7°C)	N/A	±(01% rdg + 0.7°C)
Accuracy (T)	N/A	±(01% rdg + 0.7°C)	N/A	±(01% rdg + 0.7°C)
RH% range	N/A	N/A	0.0%RH~99.9%RH	
Accuracy	N/A	N/A	±5%RH(at 25°C, 10~90%RH, others± 7%RH)	
Memory capacity	16000	32000	16000	32000
Operating Temp. RH	0~50°C (32~122°F), <80%RH			

A. Install logger driver for Windows (XP/Vista/Win7/Win8/Win8.1/Win10)

The PL2303_Prolific_DriverInstaller_v110.exe driver is for Windows operation system, follow the installation steps hereunder:

1. Download Step1-USB Driver (For Win 10) from website, and select PL2303_Prolific_DriverInstaller_v110.exe for installation the driver.



2. The set up status
3. Click "NEXT" to continue.
4. After complete the installation , press "Finished".

B. Install the logger software for Windows (XP/Vista/Win7/Win8/Win8.1/Win10)

Please follow the following steps to install the software

1. Download the software from website, in Step 2. click " Setup.exe " to install



2. Select the destination folder you are go to save by click "Browse" button
3. Once you finish selecting ,press "Next".
4. Select "I accept the License Agree men:(s)" and press NEXT button.
5. Click NEXT button when you see the following.
6. Press FINISH button to complete the installation.
7. Restart the Windows XP system

C. Run the software from Windows (XP/Vista/Win7/Win8/Win8.1/Win10)

1. Plug the USB cable into USB port, since you have already Installed the USB driver, computer will automatically detect logger ,
2. Find "Datalogger" in START→PROGRAMS→Data logger
3. Select logger software folder.



Reminder:

Software is installed completed, "Get Datalog's Identifier" shows as below(pic.1), then press SETTING button to enter Log setting

Note: If logger is not plugged in USB port, the warning message "Reminder: Data Logger is not plugged in USB port!" shows next page(pic.2) Make sure logger is plugged in and choose the correct COM port.



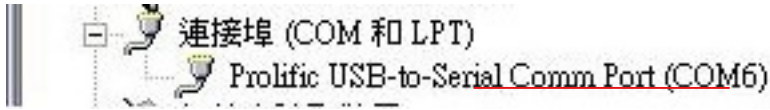
(Pic.1)

(Pic.2)

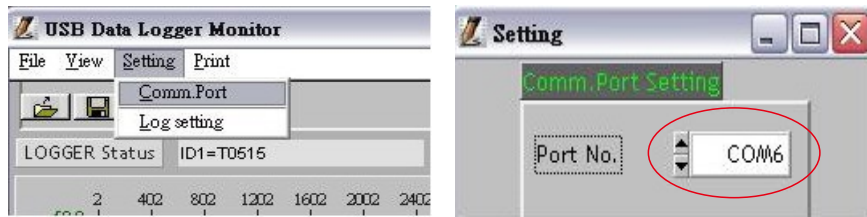
NOTE:

If software message box show as pic2. Follow the next steps.

1. click “My computer””Content” in hardware content, click “Device manager” to find the listed (COMx) listed under Ports(COM & LPT as below with red line. If you may Prolific USB-to-Serial Comm. Port , it means the logger is connected to computer properly.



2. Remember the Comm port number and go back to software.
3. Click “Setting” ”Comm port “ select the port number as you see from step 1, then press OK button.



LOGGER SETTING

BASIC:(Pic.3)

1:ID setting

Maximum 20 characters , name your logger press OK button to confirm.

2:Current Date/Time

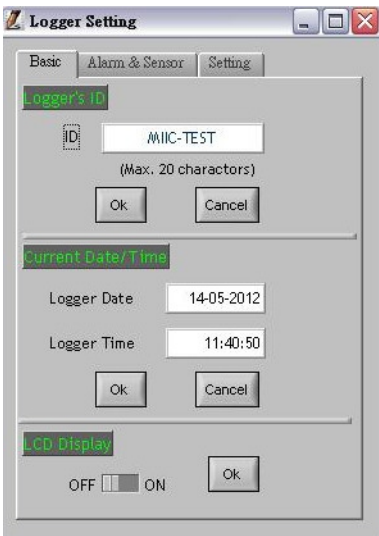
Clock setting, the system automatically shows current date and time of your pc. Press OK to confirm.

(Note :Schedule date & time refer to current pc date and time)

► Click OK to sync the meter’s date and time every time.

3:LCD display set (N/A for non-LCD models)

Press ON (Logger LCD still illuminated after complete recording), or OFF(LCD is not illuminated after complete recording. Press OK after selection.



(Pic.3)

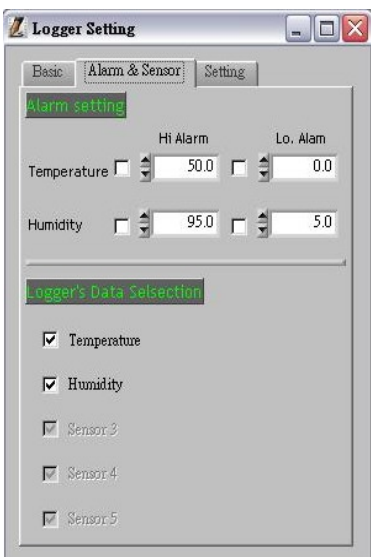
ALARM&SENSOR:(Pic.4)

1.Select Temp./Humidity alarm, set Hi/Lo Temp. and Hi/Lo Humidity values.

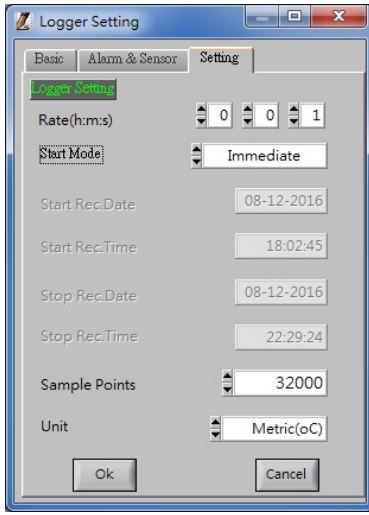
(Red LED will flash if the current reading is over the setting.)

2.Select the parameter you want to record.

Example: Total is 16K memory, if choose Temp. and RH sensors at the same time, memory store will split to 8K for Temp.+8K for RH.



(Pic.4)



(Pic.5)

SETTING:(Pic.5)

1: Set sample point (K=1,000 multiple basis within total memory points)

2.Set sample rate, start mode to record:

Select “hour(1~6), “minute(0~59)”, “second(0~59)” time interval. Select 5 start to record modes from: (See more detail below)

- (a) Immediately
- (b) Schedule
- (c) Real-time (PC is always connected with the logger unit)
- (d) Key start (Start recording by pressing button)
- (e) Roll-over (when memory are full, logger covers the earliest memory automatically)

3.Select Unit : Select Temperature unit °C/°F,press OK to confirm.

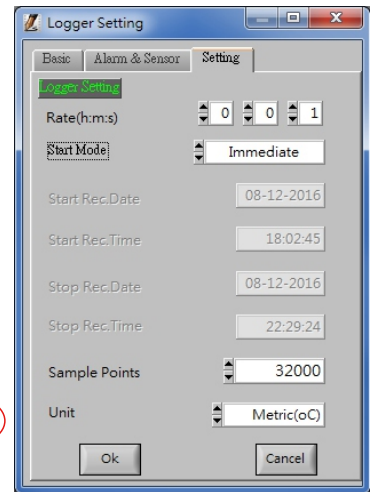
(a) Immediately

Select immediately start mode by pressing the OK button. Logger starts recording at once.

(b) Schedule start mode:

Select the date and time meter will start recording. Please follow the date and time form (M/D/Y,H:M:S)

(c) Real-time start mode:



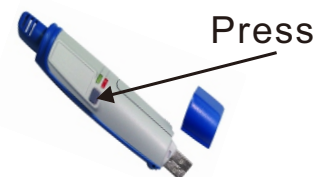
1.After set start mode at real-time ,datalogger starts login records. When logger records, the green fan at left corner shows it is under recording.(Meter should be connected with pc all the time,under this mode.)

2.In real-time mode, it shows “STOP” button instead of “DOWNLOAD” at the right corner. Press “STOP” to stop real-time recording. Then button will change into “DOWNLOAD”. Press “DOWNLOAD”for downloading data.

► Before exit software data has to be downloaded

(d) Key-start mode:

1. Select start mode at “Key-start”, remove datalogger from pc.
2. Use a sharp pin to touch the grey button, start logging.
3. Datalogger stop recording after memory is full.



NOTE:

The button is designed for not easy to touch , users have to use a sharp pin to touch (If you set up start mode as “BUTTON”),to prevent carelessly touch to start or stop the recording.

After set up “key start” as start mode, remove the logger from USB port. Use a sharp pin to push the middle of gray button, until you hear a “ click sound “ , the LED will flash to start recording.

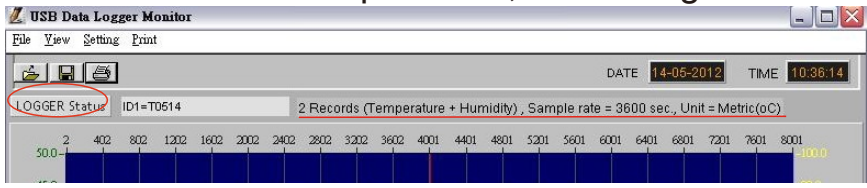
(e) Roll-over mode:

Select the mode to record when the data is full, it will cover the earliest memory. After download the data , long press grey button to record without reset up each parameter and selection.

INTERFACE INTRODUCTION

Logger Status:

Before download data, press **LOGGER status** to show ID, Records, Sample rate, Unit. **NOTE:** Once **Download** button is pressed, recording is inactivated.



Download data:

Press **DOWNLOAD** button, data download in few seconds. Graph shows automatically

NOTE: Please do not press **DOWNLOAD** button if you won't stop record. You can press **LOGGER STATUS** button to see record points.

Retrieve file:

Press **RETRIEVE FILE** button to select file and show the graph.

Save data:

Press **SAVE** button to save txt.file.

View Data Table:

Press **View** button to get data table with details. (pic.6)

No.	Date	Time	Temperature(oC)	Humidity%
1	05-06-2012	16:41:26	26.7	45.4
2	05-06-2012	16:41:27	26.7	45.4
3	05-06-2012	16:41:28	26.7	45.3
4	05-06-2012	16:41:29	26.7	45.3
5	05-06-2012	16:41:30	26.7	45.3
6	05-06-2012	16:41:31	26.7	45.3
7	05-06-2012	16:41:32	26.7	45.3
8	05-06-2012	16:41:33	26.7	45.3
9	05-06-2012	16:41:34	26.7	45.3
10	05-06-2012	16:41:35	26.7	45.3
11	05-06-2012	16:41:36	26.7	45.3
12	05-06-2012	16:41:37	26.7	45.3
13	05-06-2012	16:41:38	26.7	45.3
14	05-06-2012	16:41:39	26.7	45.3
15	05-06-2012	16:41:40	26.7	45.3
16	05-06-2012	16:41:41	26.7	45.3
17	05-06-2012	16:41:42	26.7	45.3
18	05-06-2012	16:41:43	26.7	45.3
19	05-06-2012	16:41:44	26.7	45.3

(pic.6)

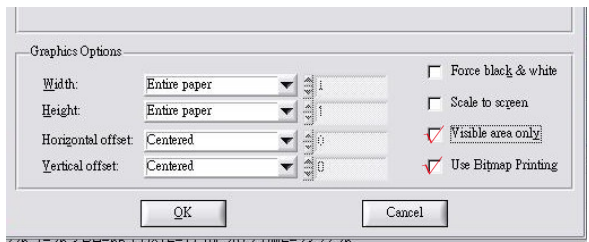
Print graph:

Press **PRINT** button and print graph. Follow the print setting below to print full screen graph. Press **OK** to print pdf file. (pic.7)

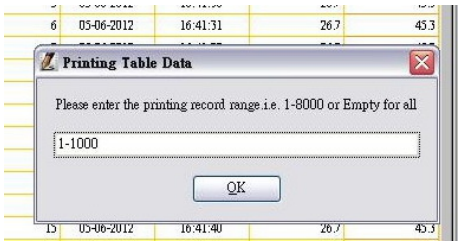
Print Table Data:

Press table data, the screen shows the record range, enter the start number to the end number (For example: 1~500 or 200~1000...or leave it blank for printing all data). (pic.8)

Save each pdf. files with different names.



(pic.7)



(pic.8)

Data clear

The data is stored in the memory till next setting start, meter will clean previous data automatically. So if you start next data logging, there is no way you can find the data you haven't stored.

Zoom in/out&Move

Hold + Click  = Screen graph zoom in

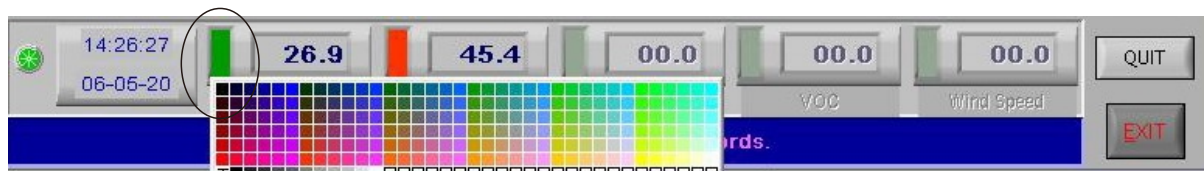
Hold + Click  = Screen graph zoom out

Hold + Click  = Move screen graph

Press or = Read each measurement .

NOTE: If the graph size is over zoom in/out, follow the color select below the graphic will go back to default size

Line color selecting:



1. Click the color beside the reading (Temp. RH), color box shows below.
2. Move mouse to review and select color.
3. Click to save, the color appear on line and bar.

WARRANTY

This instrument is warranted for two years from the date of purchase (One year limited warranty applies to cables). A Return Authorization letter must be issued before returning for any reason. This warranty does not apply to defects resulting from action of the user such as misuse, abuse, alteration neglect, improper wiring, improper maintenance or repair, or unauthorized modification, damage resulting from leaking batteries, operation outside of specification.

During the warranty period the manufacturer reserved the right to decide either to repair or replace the product. The meters are to be returned along with good packing to prevent any damage in shipment and insured against possible damage or loss.

The two years' warranty doesn't apply to:

- Accessories and batteries (not covered by warranty).
- Claims is not acceptable for improper use (including adaptation to particular applications not foreseen in the instructions manual) or improper combination with incompatible accessories or equipment, or by previous attempts for repair carried out by none skilled or unauthorized personnel.